

# **A46 Newark Bypass**

**TR010065/APP/6.3**

## **6.3 Environmental Statement**

### **Appendix 12.1 Walker, Cyclist and Horse- rider (WCH) Survey Results**

APFP Regulation 5(2)(a)

Planning Act 2008

Infrastructure Planning (Applications: Prescribed Forms and  
Procedure) Regulations 2009

Volume 6

April 2024

Infrastructure Planning

Planning Act 2008

**The Infrastructure Planning  
(Applications: Prescribed Forms  
and Procedure) Regulations 2009**

A46 Newark Bypass

Development Consent Order 202[x]

---

**ENVIRONMENTAL STATEMENT**

**APPENDIX 12.1 WALKER, CYCLIST AND HORSE-RIDER (WCH) SURVEY  
RESULTS**

---

<b>Regulation Number:</b>	Regulation 5(2)(a)
<b>Planning Inspectorate Scheme Reference</b>	TR010065
<b>Application Document Reference</b>	TR010065/APP/6.3
<b>Author:</b>	A46 Newark Bypass Project Team, National Highways

<b>Version</b>	<b>Date</b>	<b>Status of Version</b>
Rev 1	April 2024	DCO Application

## Contents

<b>1 Walker, cyclist and horse-rider survey results .....</b>	<b>1</b>
<b>Appendix A: Walking, Cycling and Horse-riding Survey Locations .....</b>	<b>4</b>

# 1 Walker, cyclist and horse-rider survey results

- 1.1.1 Walker, cyclists, and horse-rider (WCH) counts were undertaken at 17 locations within the vicinity of the proposed A46 Newark Bypass (the Scheme); see Appendix A (Walking, Cycling and Horse-riding Survey Locations) of this Report for locations. Details of the survey methodology used is detailed within Appendix E (Walking, Cycling and Horse-Riding Assessment and Review) of the Transport Assessment (TR010065/APP/7.4). Chapter 12 (Population and Human Health) of the Environmental Statement (ES) (TR010065/APP/6.1) contains the assessment on WCH routes.
- 1.1.2 Each site was surveyed from 6am to 10pm on both a weekday and a weekend in early spring 2023 (between March and April). Manual surveys were carried out with two members of staff per eight-hour shift. The surveys categorised flows for pedestrians, pedestrians with dogs, pedestrians with a pram or pushchair, mobility impaired users, wheelchair users, joggers, cyclists and equestrians.
- 1.1.3 Surveyed routes include walking/cycling routes along highway routes, as well as formal footpaths and bridleways. Two surveyed locations (Site 6 and Site 9) are not considered Public Rights of Way (PRoW). However, these have been surveyed due to their proximity to the A46 and evidence of use.
- 1.1.4 Table 1-1 sets out the result of the WCH surveys.

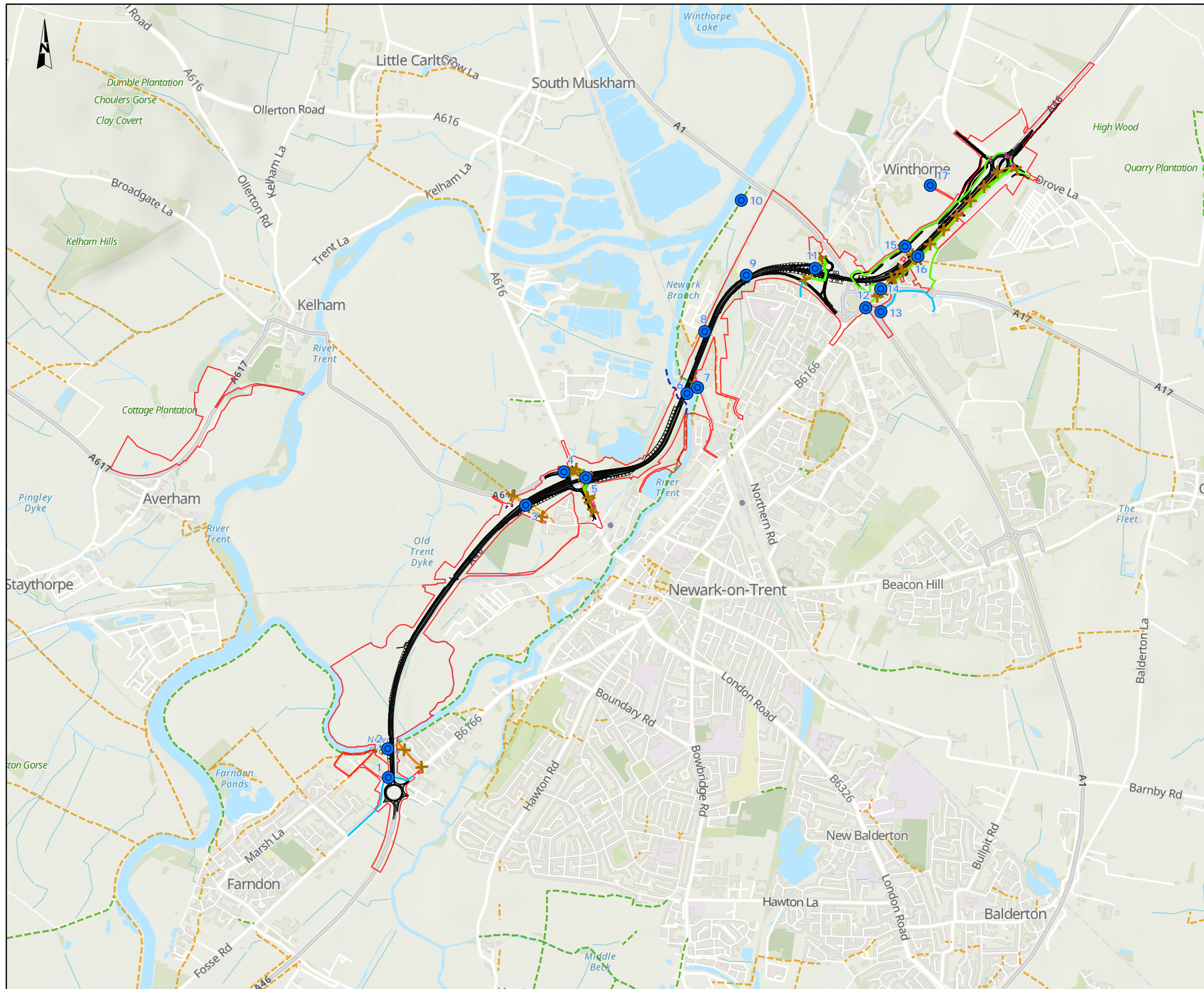
**Table1-1: WCH users survey**

Survey location	PRoW	WCH route	Survey period	Weekday flow	Weekend flow
Site 1	Y	A46 Underpass (walking / cycleway off Crees Lane)	5 days (3 weekdays and 2 weekend days)	51 users <ul style="list-style-type: none"> <li>• 36 pedestrians</li> <li>• 7 pedestrians with dogs</li> <li>• 3 joggers</li> <li>• 5 cyclists</li> </ul>	23 users <ul style="list-style-type: none"> <li>• 17 pedestrians</li> <li>• 4 pedestrians with dogs</li> <li>• 2 cyclists</li> </ul>
Site 2	Y	Newark BW2	2 days (1 weekday and 1 weekend day)	150 users <ul style="list-style-type: none"> <li>• 48 pedestrians</li> <li>• 76 pedestrians with dogs</li> <li>• 6 joggers</li> <li>• 19 cyclists</li> <li>• 1 horse-rider</li> </ul>	162 users <ul style="list-style-type: none"> <li>• 50 pedestrians</li> <li>• 95 pedestrians with dogs</li> <li>• 6 joggers</li> <li>• 11 cyclists</li> </ul>
Site 3	Y	Newark FP14	2 days (1 weekday and 1 weekend day)	11 users <ul style="list-style-type: none"> <li>• 11 pedestrians with dogs</li> </ul>	4 users <ul style="list-style-type: none"> <li>• 4 pedestrians</li> </ul>

Survey location	PRoW	WCH route	Survey period	Weekday flow	Weekend flow
Site 4	Y	Trent Valley Way (Kelham Road)	2 days (2 weekdays)	34 users <ul style="list-style-type: none"> <li>• 20 pedestrians</li> <li>• 12 pedestrians with dogs</li> <li>• 2 cyclists</li> </ul>	Survey was not carried out on a weekend
Site 5	Y	Great North Road (Cattle Market Roundabout )	5 days (3 weekdays and 2 weekend days)	70 users <ul style="list-style-type: none"> <li>• 52 pedestrians</li> <li>• 4 pedestrians with dogs</li> <li>• 1 jogger</li> <li>• 13 cyclists</li> </ul>	48 users <ul style="list-style-type: none"> <li>• 32 pedestrians</li> <li>• 5 pedestrians with dogs</li> <li>• 1 jogger</li> <li>• 10 cyclists</li> </ul>
Site 6	N	Footpath at end of Newark BW5	2 days (1 weekday and 1 weekend day)	7 users <ul style="list-style-type: none"> <li>• 1 pedestrian</li> <li>• 5 pedestrians with dogs</li> <li>• 1 other</li> </ul>	41 users <ul style="list-style-type: none"> <li>• 31 pedestrians</li> <li>• 7 pedestrians with dogs</li> <li>• 2 joggers</li> <li>• 1 other</li> </ul>
Site 7	Y	Newark BW6 (within Order Limits)	2 days (1 weekday and 1 weekend day)	13 users <ul style="list-style-type: none"> <li>• 3 pedestrians</li> <li>• 4 pedestrians with dogs</li> <li>• 2 cyclists</li> <li>• 4 other</li> </ul>	48 users <ul style="list-style-type: none"> <li>• 27 pedestrians</li> <li>• 19 pedestrians with dogs</li> <li>• 2 cyclists</li> </ul>
Site 8	Y	Newark FP48#1	2 days (1 weekday and 1 weekend day)	23 users <ul style="list-style-type: none"> <li>• 5 pedestrians</li> <li>• 18 pedestrians with dogs</li> </ul>	27 users <ul style="list-style-type: none"> <li>• 27 pedestrians with dogs</li> </ul>
Site 9	N	N/A (field)	2 days (1 weekday and 1 weekend day)	13 users <ul style="list-style-type: none"> <li>• 6 pedestrians</li> <li>• 7 pedestrians with dogs</li> </ul>	83 users <ul style="list-style-type: none"> <li>• 14 pedestrians</li> <li>• 52 pedestrians with dogs</li> <li>• 17 cyclists</li> </ul>
Site 10	Y	Newark BW6 (outside of Order Limits)	7 days (5 weekdays and 2 weekend days)	114 users <ul style="list-style-type: none"> <li>• 74 pedestrians</li> <li>• 20 pedestrians with dogs</li> <li>• 8 pedestrians with pushchairs</li> <li>• 1 wheelchair user</li> <li>• 11 cyclists</li> </ul>	65 users <ul style="list-style-type: none"> <li>• 43 pedestrians</li> <li>• 13 pedestrians with dogs</li> <li>• 2 pedestrians with pushchairs</li> <li>• 1 mobility impaired person</li> <li>• 5 cyclists</li> <li>• 1 equestrian</li> </ul>
Site 11	Y	Trent Valley Way and National Cycle	7 days (5 weekdays and 2 weekend days)	328 users <ul style="list-style-type: none"> <li>• 227 pedestrians</li> </ul>	93 users <ul style="list-style-type: none"> <li>• 58 pedestrians</li> </ul>

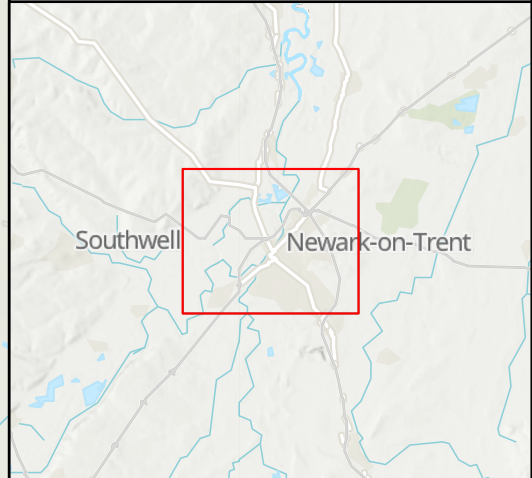
Survey location	PRoW	WCH route	Survey period	Weekday flow	Weekend flow
		Network Route 64 (Winthorpe Road)		<ul style="list-style-type: none"> <li>• 46 pedestrians with dogs</li> <li>• 9 pedestrians with pushchairs</li> <li>• 4 wheelchair users</li> <li>• 2 joggers</li> <li>• 40 cyclists</li> </ul>	<ul style="list-style-type: none"> <li>• 10 pedestrians with dogs</li> <li>• 4 pedestrians with pushchairs</li> <li>• 1 wheelchair</li> <li>• 3 joggers</li> <li>• 16 cyclists</li> <li>• 1 equestrian</li> </ul>
Site 12	Y	Footway off Lincoln Road	2 days (1 weekday and 1 weekend day)	261 users <ul style="list-style-type: none"> <li>• 167 pedestrians</li> <li>• 5 pedestrians with dogs</li> <li>• 2 joggers</li> <li>• 87 cyclists</li> </ul>	201 users <ul style="list-style-type: none"> <li>• 108 pedestrians</li> <li>• 11 pedestrians with dogs</li> <li>• 3 joggers</li> <li>• 79 cyclists</li> </ul>
Site 13	Y	Footbridge at Friendly Farmer Roundabout	2 days (1 weekday and 1 weekend day)	233 users <ul style="list-style-type: none"> <li>• 142 pedestrians</li> <li>• 3 pedestrians with dogs</li> <li>• 88 cyclists</li> </ul>	191 users <ul style="list-style-type: none"> <li>• 106 pedestrians</li> <li>• 85 cyclists</li> </ul>
Site 14	Y	Footway located south-west of Mint Leaf	2 days (1 weekday and 1 weekend day)	1 user <ul style="list-style-type: none"> <li>• 1 pedestrian</li> </ul>	10 users <ul style="list-style-type: none"> <li>• 6 pedestrians</li> <li>• 4 pedestrians with dogs</li> </ul>
Site 15	Y	Winthorpe FP2	2 days (1 weekday and 1 weekend day)	2 users <ul style="list-style-type: none"> <li>• 1 pedestrian</li> <li>• 1 pedestrian with dogs</li> </ul>	1 user <ul style="list-style-type: none"> <li>• 1 pedestrian</li> </ul>
Site 16	Y	Winthorpe FP3	2 days (1 weekday and 1 weekend day)	5 users <ul style="list-style-type: none"> <li>• 4 pedestrians</li> <li>• 1 jogger</li> </ul>	2 users <ul style="list-style-type: none"> <li>• 2 pedestrians</li> </ul>
Site 17	Y	Hargon Lane	2 days (1 weekday and 1 weekend day)	32 users <ul style="list-style-type: none"> <li>• 6 pedestrians</li> <li>• 26 pedestrians with dogs</li> </ul>	34 users <ul style="list-style-type: none"> <li>• 8 pedestrians</li> <li>• 26 pedestrians with dogs</li> </ul>

## **Appendix A: Walking, Cycling and Horse-riding Survey Locations**



**NOTES**  
**Source**  
 Contains OS data © Crown copyright and database right (2023). All rights reserved.  
 License Number 100030649.  
 PRow data © Nottinghamshire County Council  
 Survey data collected by Mott MacDonald, 2023.  
 Proposed paths design data by Mott MacDonald, 2023.  
**Service Layer Credits**  
 Contains OS data © Crown Copyright and database right 2023  
 Contains data from OS Zoomstack

- KEY TO SYMBOLS**
- Order Limits
  - Scheme alignment
  - Walking, cycling and horse-riding survey location
  - Cycleway/ Footway
  - Permissive path
  - Public Right of Way - Bridleway
  - Public Right of Way - Footpath
  - Proposed cycleway/ footway
  - Proposed pedestrian crossing
  - ✕ Proposed stop up



C01	08/12/23	DCO APPLICATION	BH	JB	HF
REV.	DATE	AMENDMENT DETAILS	ORIG	CHK'D	APP'D

CLIENT  
 national highways

PURPOSE OF ISSUE  
 DCO APPLICATION

DEVELOPMENT CONSENT ORDER NUMBER  
 TR010065

PROJECT TITLE  
 A46 NEWARK BYPASS

DRAWING TITLE  
 Appendix A  
 Walking, Cycling and Horse-riding Survey Locations

ORIGINAL SIZE A3 SCALE 1:25,000

DRAWING NUMBER HE551478	ORIGINATOR SKAG	VOLUME ENM	PROJECT REF NO. HE551478
LOCATION CONWI_CONW	TYPE DR	ROLE LE	REVISION C01
	NUMBER 00026		

© Skanska  
 This document is issued for the party which commissioned it and for specific purposes connected with the captioned project only. It should not be relied upon by any other party or used for any other purpose.  
 We accept no responsibility for the consequences of this document being relied upon by any other party, or being used for any other purpose, or containing any error or omission which is due to an error or omission in data supplied to us by other parties.

